

Application No: DC/17/03799

**Address: Former Bacton Community
Middle School
(In The Parish Of
Wyverstone)
Wyverstone Road
Bacton
Stowmarket
IP14 4LH**

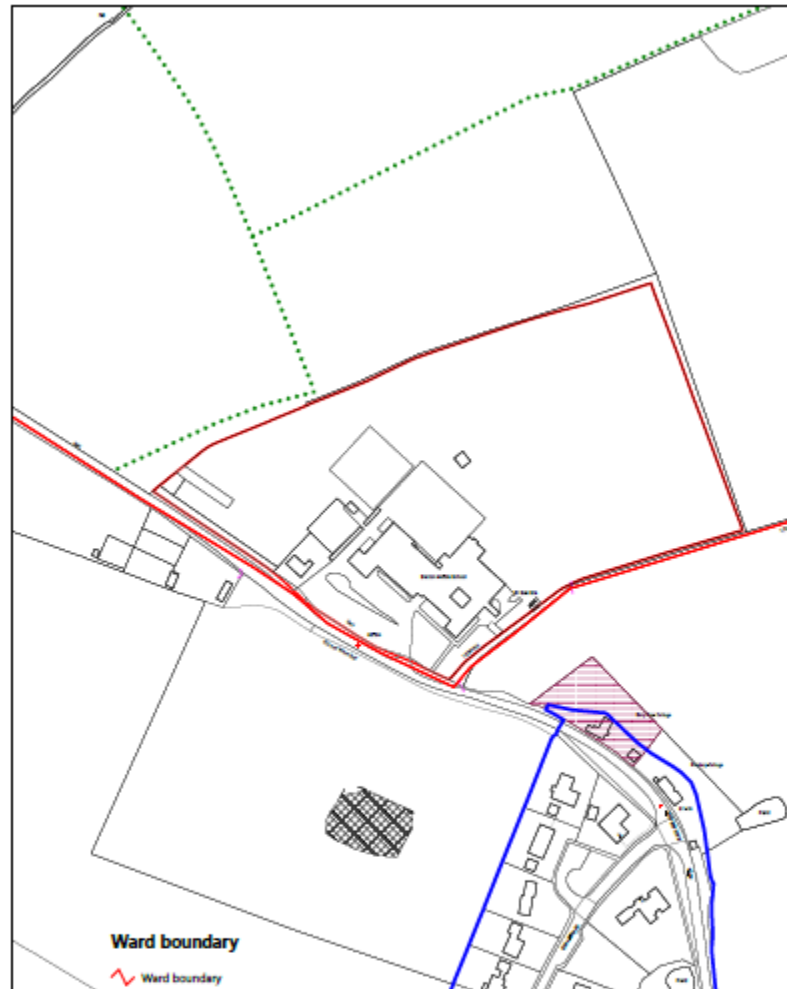




Verbal Updates:

- Confirmation and summary of any 3rd Party representations received not previously issued to members.
- Confirmation and summary of any consultee responses received not previously issued to members
- Confirmation of any changes to recommendation, conditions or reasons.

Constraints Map

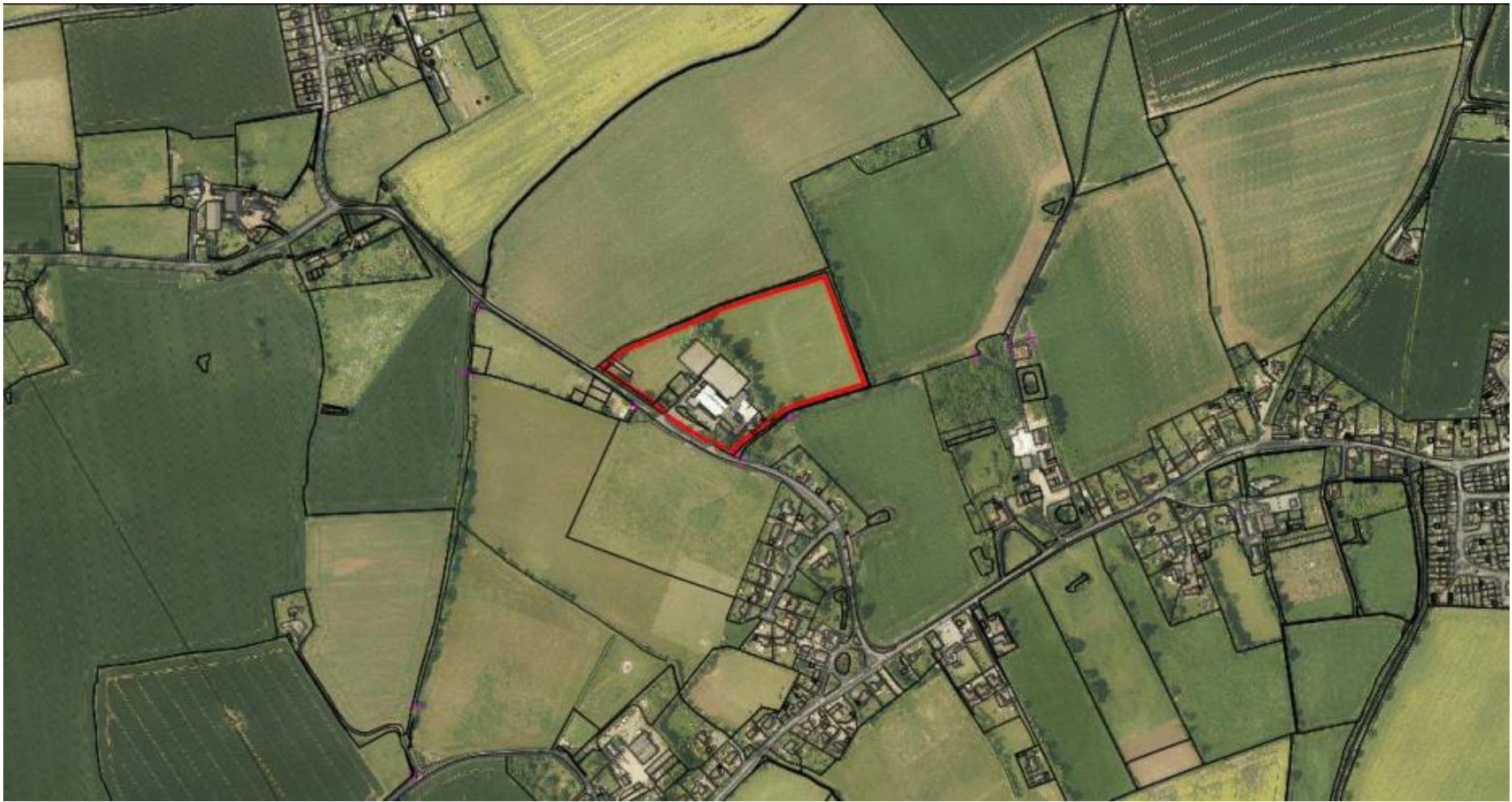


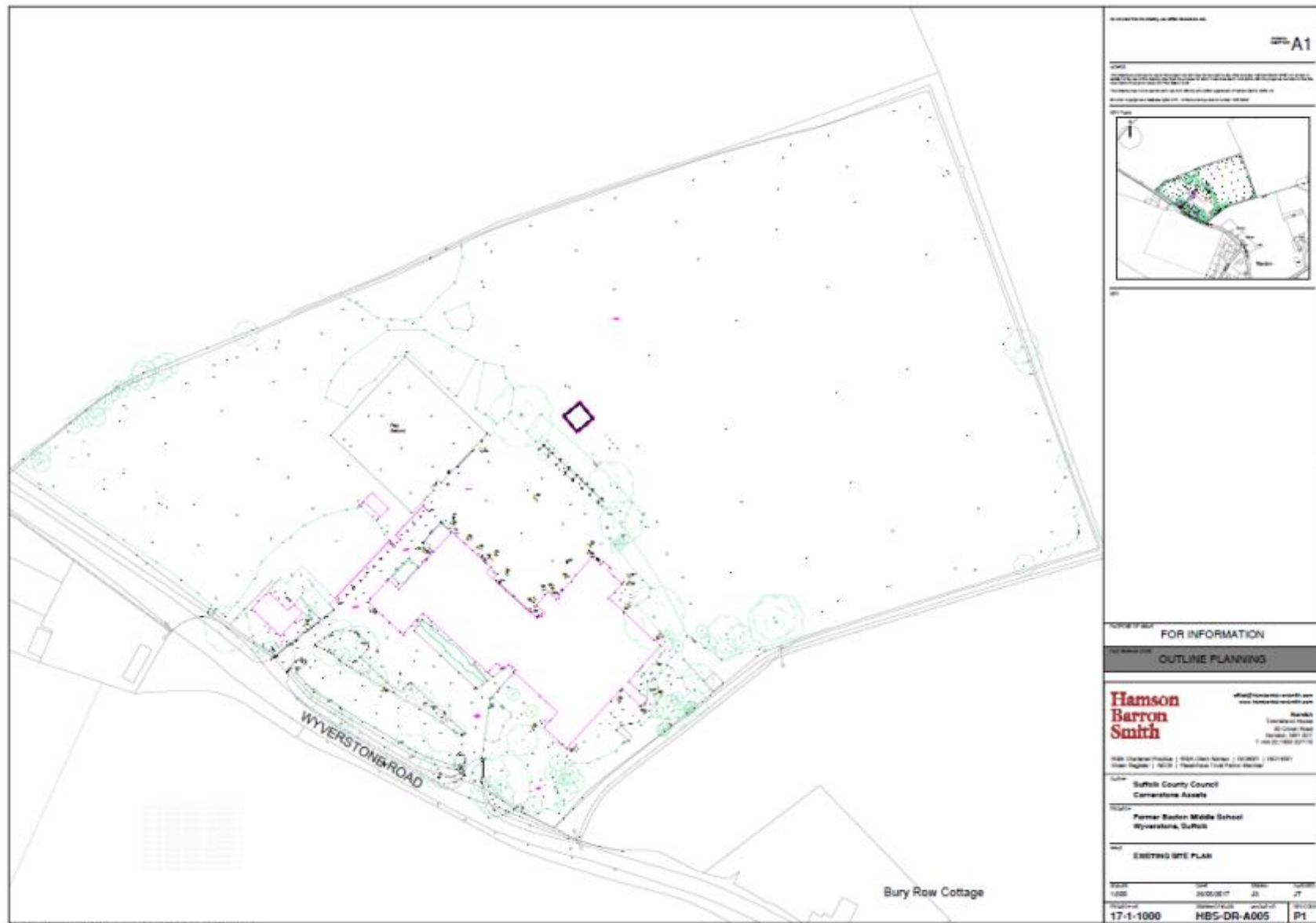
Title: Site within Wattisham safeguarding Reference: Site: Contaminated land - potential PD rights removed		LDF Village Classifications Countryside Village Primary Village Secondary Village Town Key Service Area		SCC Footpaths Overlay style
Contaminated land - potential	PD rights removed	Ward boundary	SCALE 1:2500	



MID SUFFOLK DISTRICT COUNCIL
 131, High Street, Needham Market, IP6 8DL
 Telephone : 01449 724500
 email: customerservice@cedc.uk.com
 www.mid.suffolk.gov.uk

Reproduced by permission of
 Ordnance Survey on behalf of HMSO.
 © Crown copyright and database right 2017
 Ordnance Survey Licence number 100017810





A1

FOR INFORMATION

OUTLINE PLANNING

Hamson Barron Smith

Hamson Barron Smith
100 Chapel Road
Bury Row, Suffolk
Tel: 01206 871111

Suffolk County Council
Cemeteries Assets

Former Bury Row Middle School
Wyverstone, Suffolk

EXISTING SITE PLAN

DATE	BY	SCALE	PROJECT
17-1-2017	AS	1:1000	17-1-1000
DRAWN BY		DATE	PROJECT
HBS-DR-A005		17-1-2017	P1



A1

FOR INFORMATION

OUTLINE PLANNING

Hanson Barron Smith

www.hansonbarronsmith.com

2000
The Old House
20 Green Road
Weymouth, Dorset, DT9 1JH
Tel: 01328 827114

Suffolk County Council
Countryside Assets

Former Barton Middle School
Wyerstone, Suffolk

INDICATIVE PHASING STRATEGY

17-1-1000 HBS-DR-A002 P2

Speculative Residential Mix Plan



Speculative 3D View – Over Attenuation Lagoon (looking West) Slide 10

A3

© Babergh Local Council 2017. All rights reserved. This document is for information only and does not constitute an offer of any services or products. The design and construction of any development will be subject to the approval of the relevant authorities. The design and construction of any development will be subject to the approval of the relevant authorities.

FOR INFORMATION

OUTLINE PLANNING

Hamson Barron Smith

Official Planning Consultants Ltd
www.hamsonbarronsmith.com

Hamson Barron Smith
80 Essex Road
Newark, Nottingham, NG24 1JF
T +44 (0) 1902 227115

RIBA Chartered Practice | RIBA Chartered | RIBA 650881 | 80114801
Green Register | AECB | Passivhaus Trust Partner Member

11491 **Suffolk County Council**
Cornerstone Assets

11492 **Former Babton Middle School**
Wyerstone, Suffolk

11493 **SPECULATIVE 3D VIEW**
Over Attenuation Lagoon (Looking West)

DATE	NO.	ISSUED	BY
07/05/17	01	JT	JT

17-1-1000 HRS-DR-A004 P1

Scale Printed: 27 Aug 2017 16:22:54

