



Dear Members,

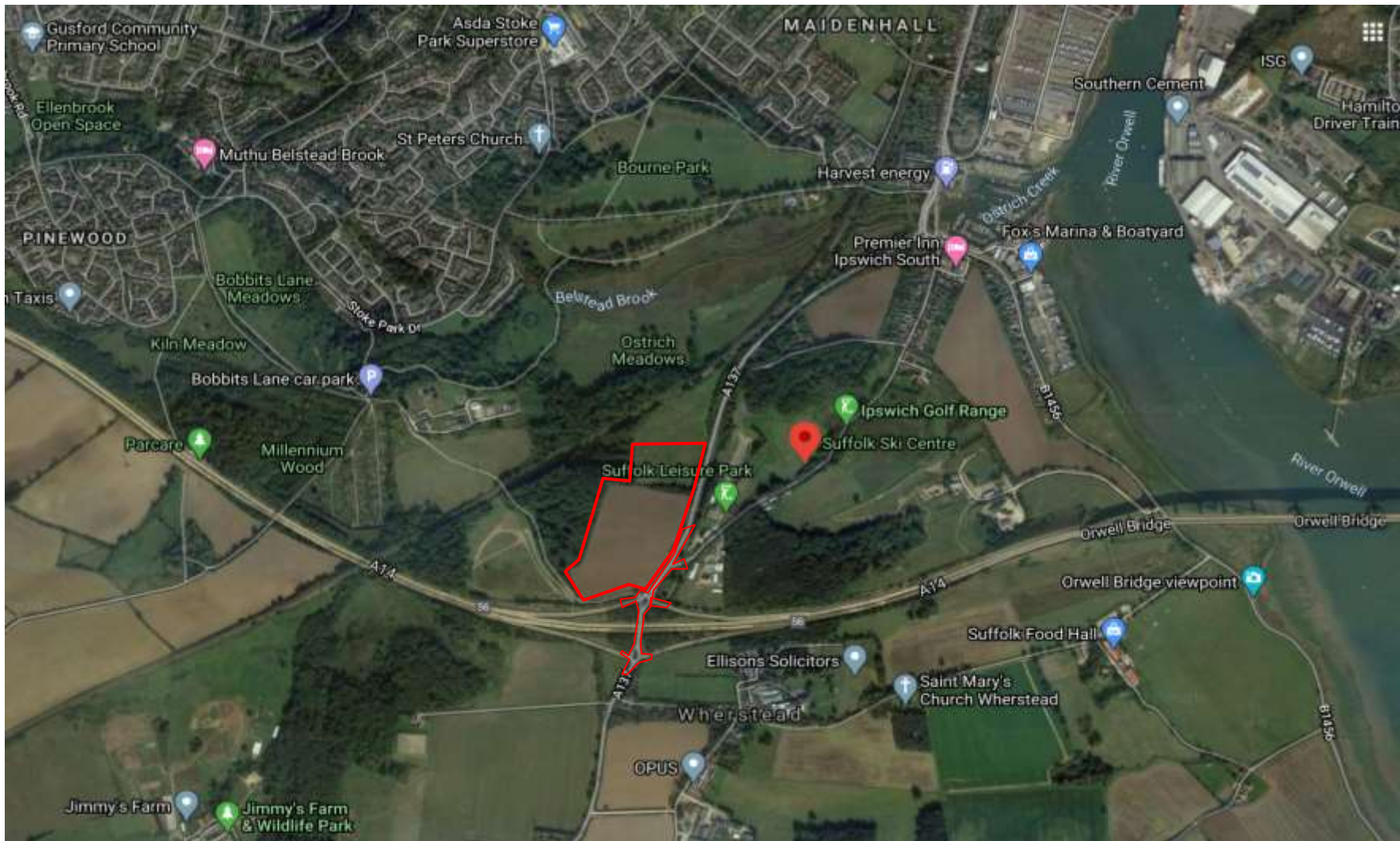
As it is not possible to undertake a committee site visit at this time we have compiled a 'virtual' site visit for you, with a mixture of aerial views, photographs and video footage of the sites and surroundings.



Virtual Committee Site Visit

Application Refs: DC/19/02798
and DC/19/05093

Site: Land North and East of
Bobbits Lane, Wherstead



The site outlined in red shows both application sites for DC/19/02798 and DC/19/05093 combined as they are adjacent to one another



Aerial Flyover

Slide 4

Please watch video 1 for an aerial flyover video- the site is a field in brown-orange colour on the video.

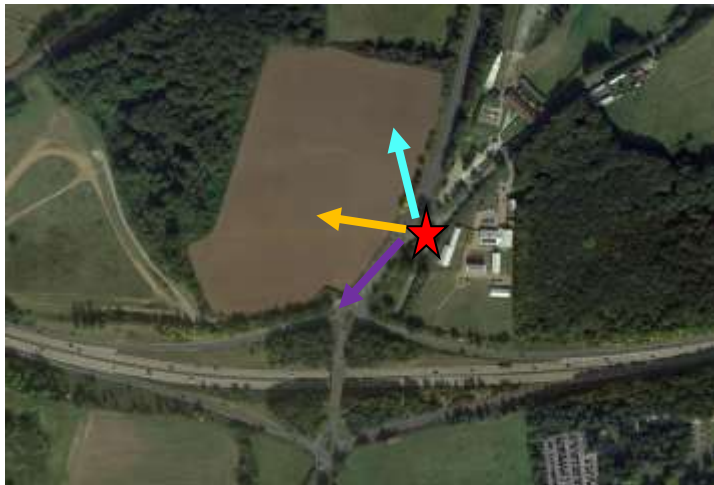
The slides will show 5 sets of the following:

- An aerial view and red starred viewpoint
- A set of photographs, with coloured arrows showing where the site is on the photo. A smaller aerial photo in the bottom right corner uses correlating coloured arrows to show which direction the photos were taken from the viewpoint.
- The numbered video footage taken from the viewpoint which can be viewed via YouTube.
- The slides will finish with driving footage along the site and junction.



Viewpoint 1

Slide 7



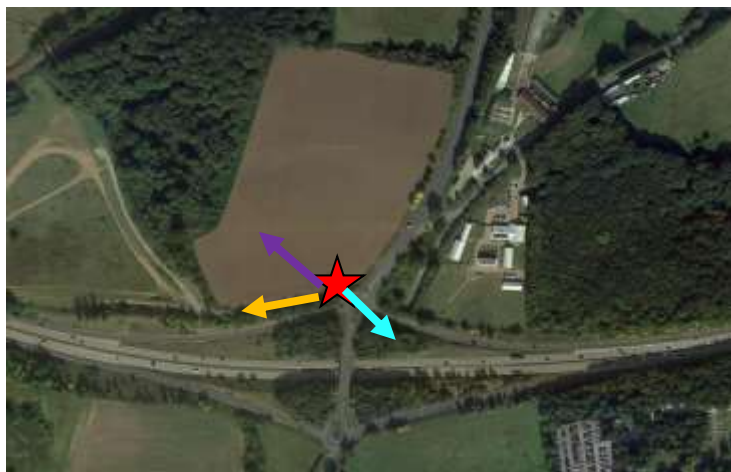


Viewpoint 1

Slide 8

Please watch video 2 for 180 degree footage
from viewpoint 1







Viewpoint 2

Slide 11

Please watch video 3 for 360 degree footage
from viewpoint 2



Viewpoint 3

Slide 13

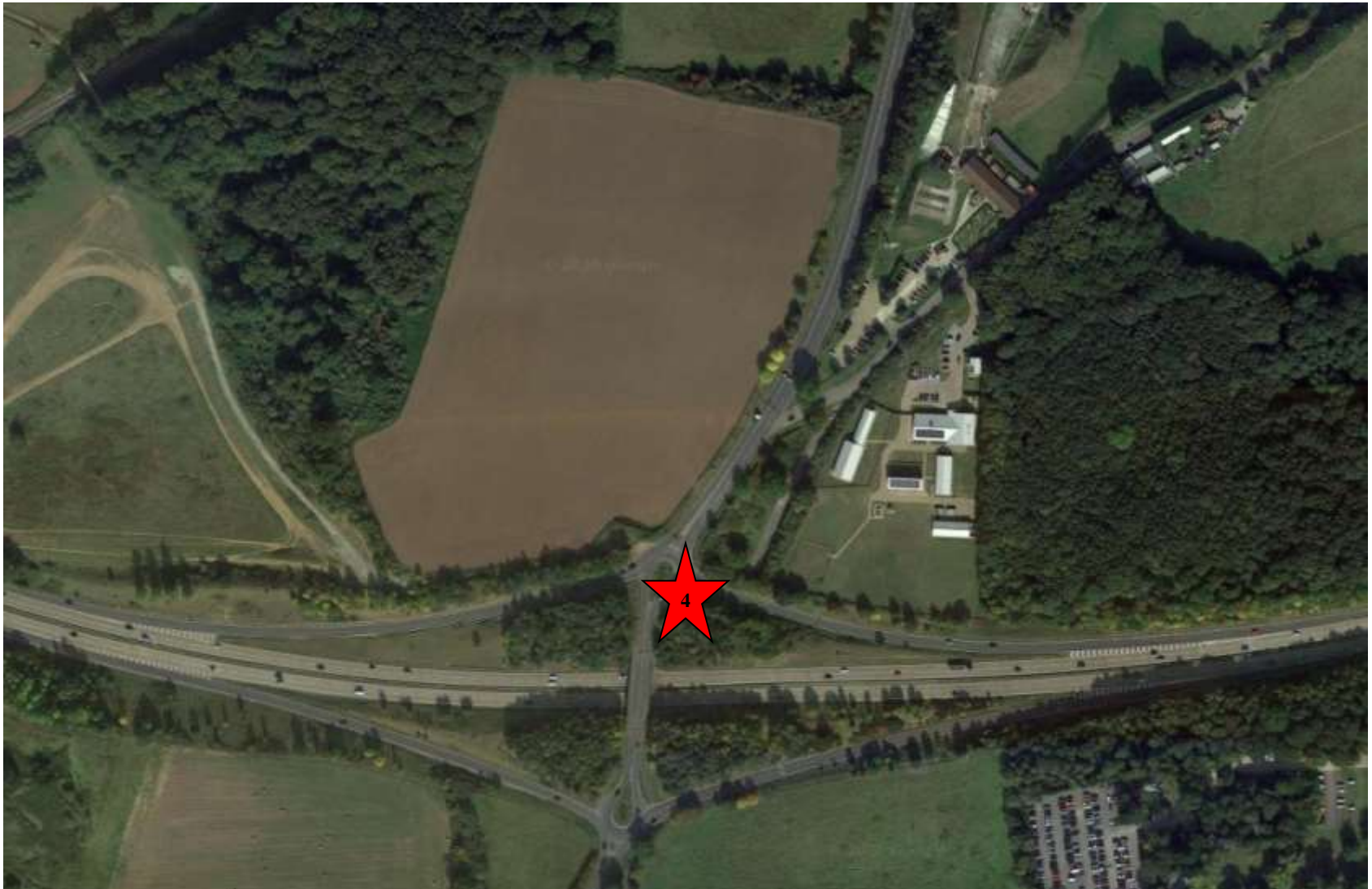


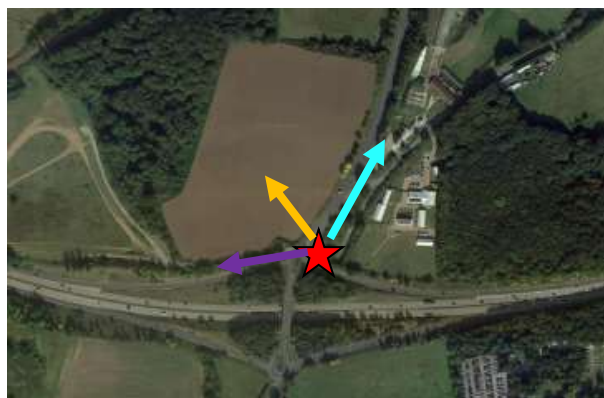


Viewpoint 3

Slide 14

Please watch video 4 for 360 degree footage
from viewpoint 3







Viewpoint 4

Slide 17

Please watch video 5 for 180 degree footage from viewpoint 4



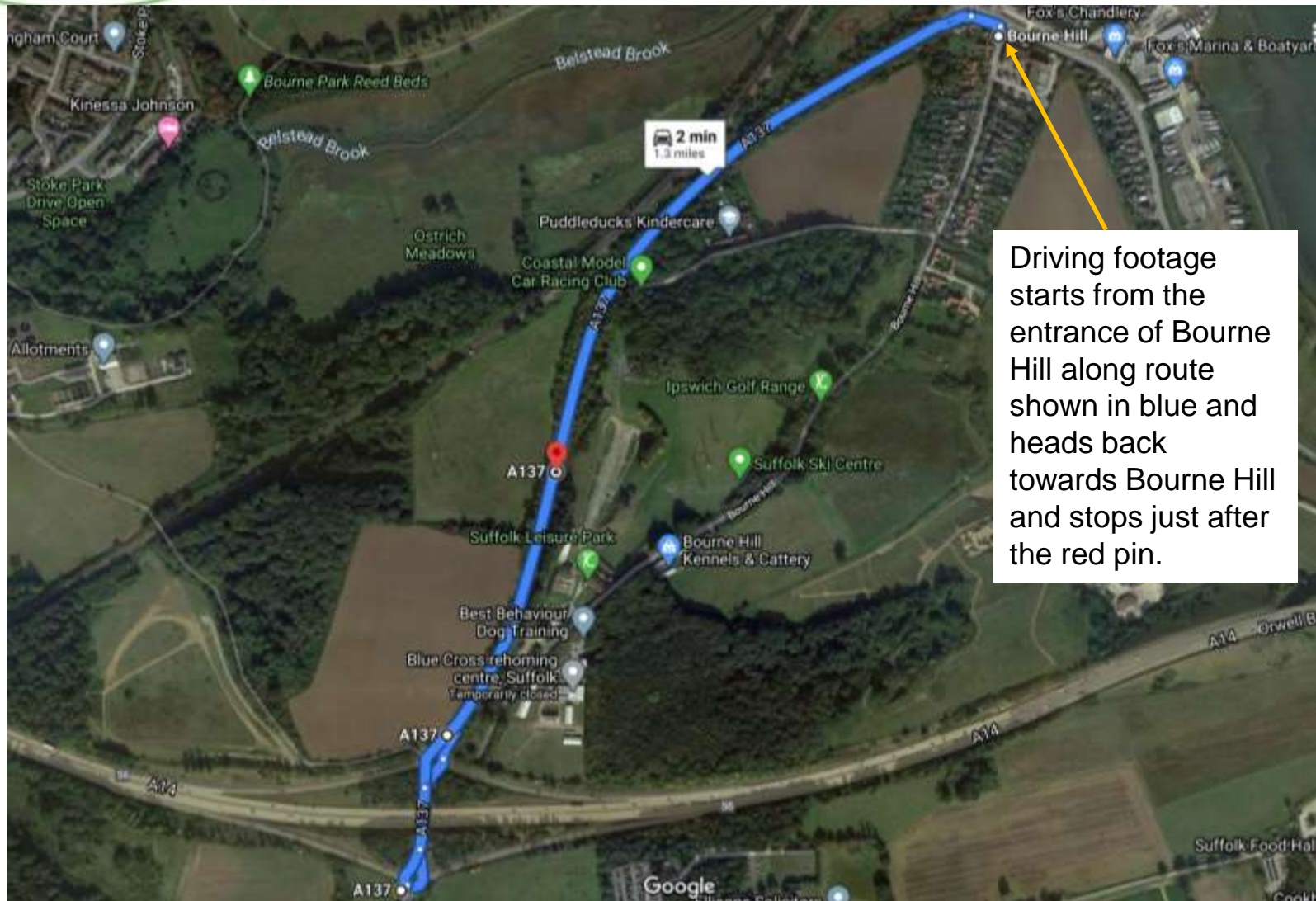




Viewpoint 5

Slide 20

Please watch video 6 for 180 degree footage
from viewpoint 5



Driving footage starts from the entrance of Bourne Hill along route shown in blue and heads back towards Bourne Hill and stops just after the red pin.



Driving Footage

Slide 22

Please watch video 7 for driving footage
along the route shown on Slide 21