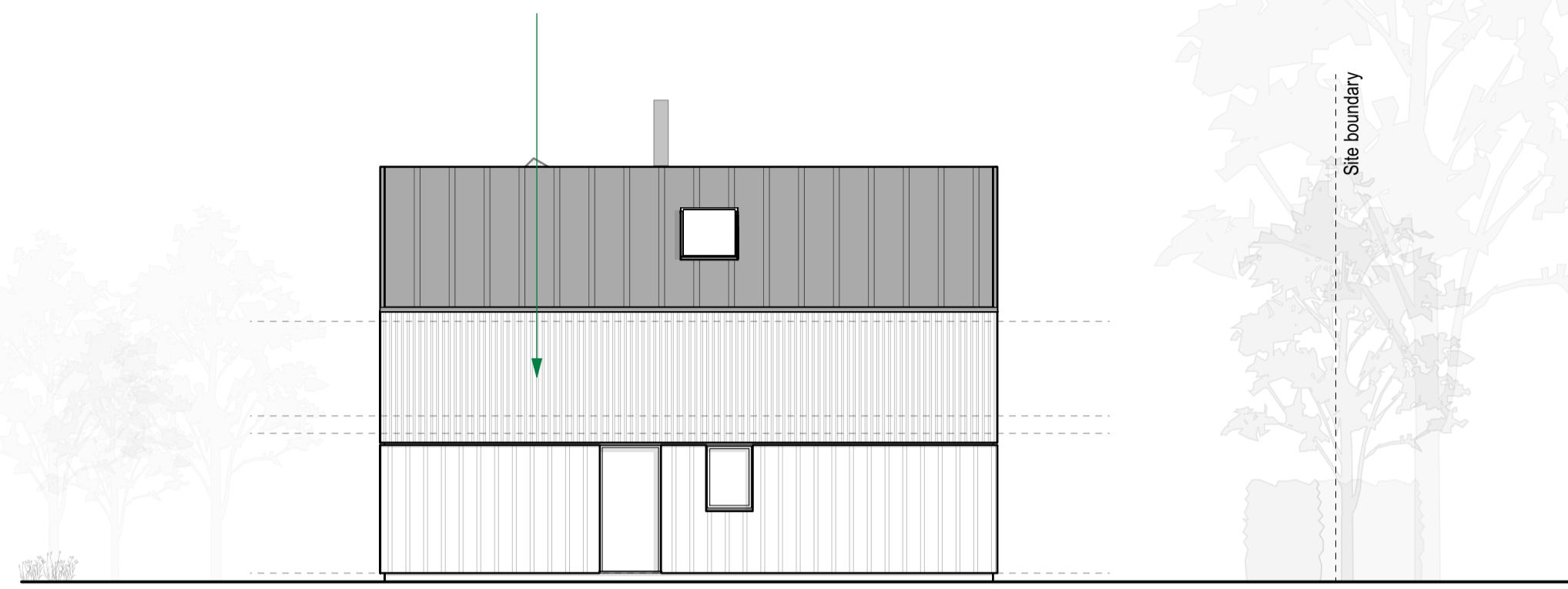


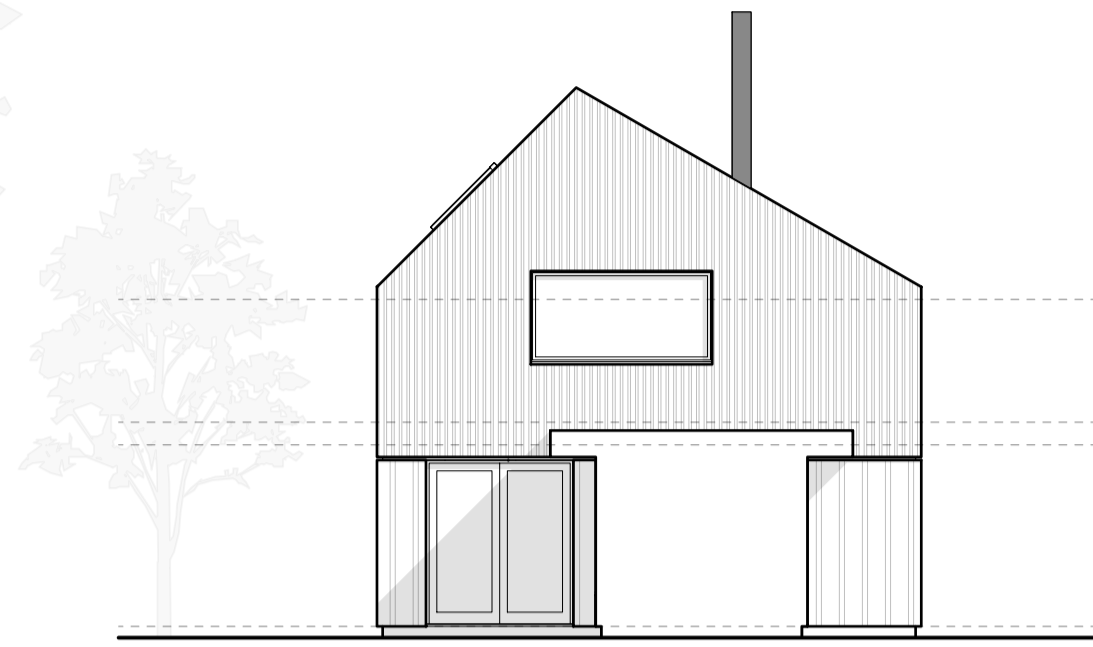
SUSTAINABILITY: MEETING FUTURE HOMES STANDARD

PASSIVE MEASURES - ORIENTATION: FEW OPENINGS TO NORTH ELEVATION - ALL TRIPLE GLAZED TO REDUCE HEAT LOSS

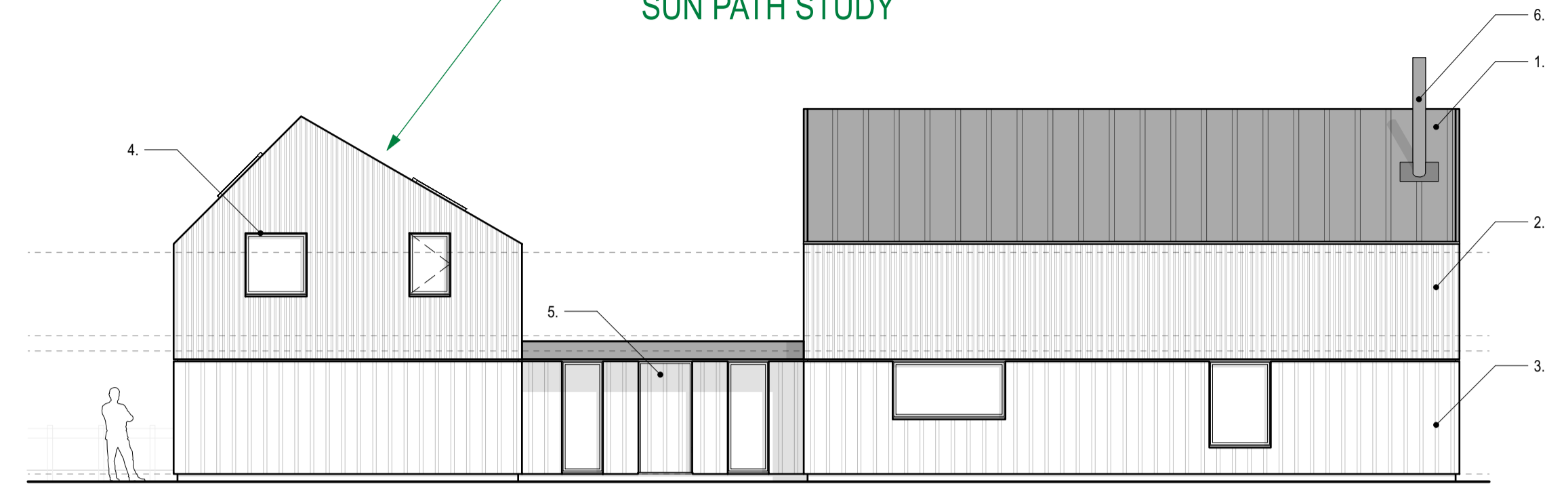
30 DEGREE SOUTH FACING ROOF SUITABLE FOR FUTURE PV - SUBJECT TO TREE SURVEY AND SUN PATH STUDY



1 NORTH ELEVATION
Scale: 1:100



2 NORTH PARTIAL ELEVATION



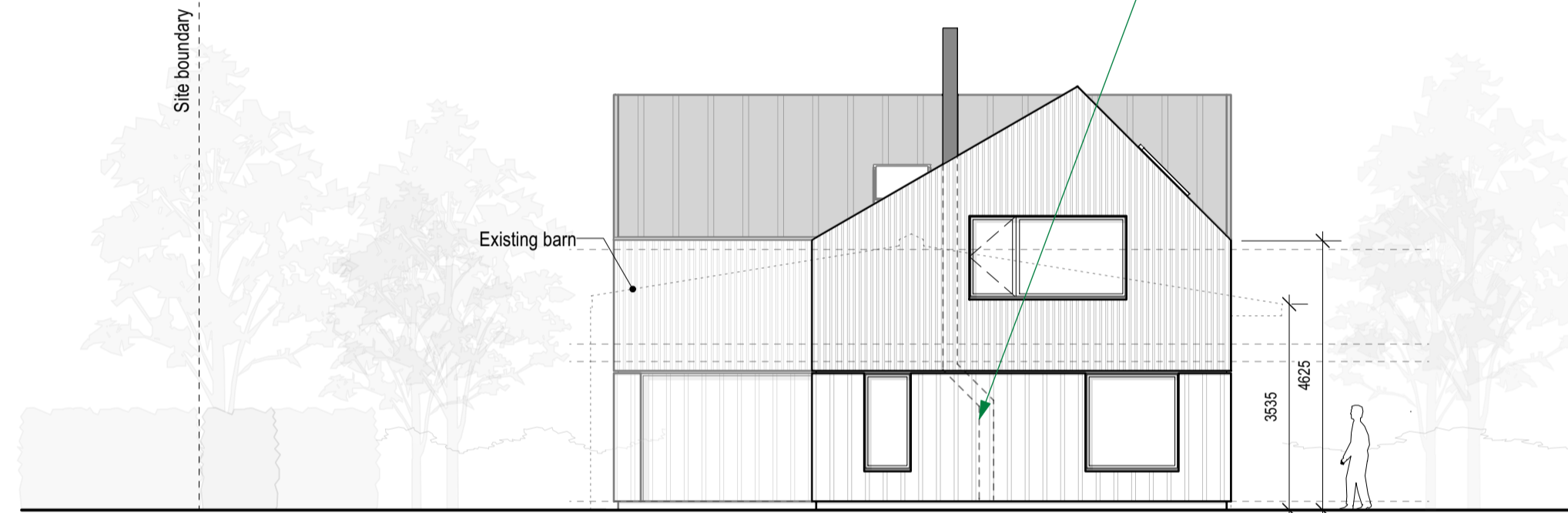
3 WEST ELEVATION

MATERIAL KEY
1. Zinc standing seam roof
2. Treated larch, random width board
3. Treated larch, board on board
4. Colour coated aluminium windows and doors
5. Timber door
6. Stainless steel flue

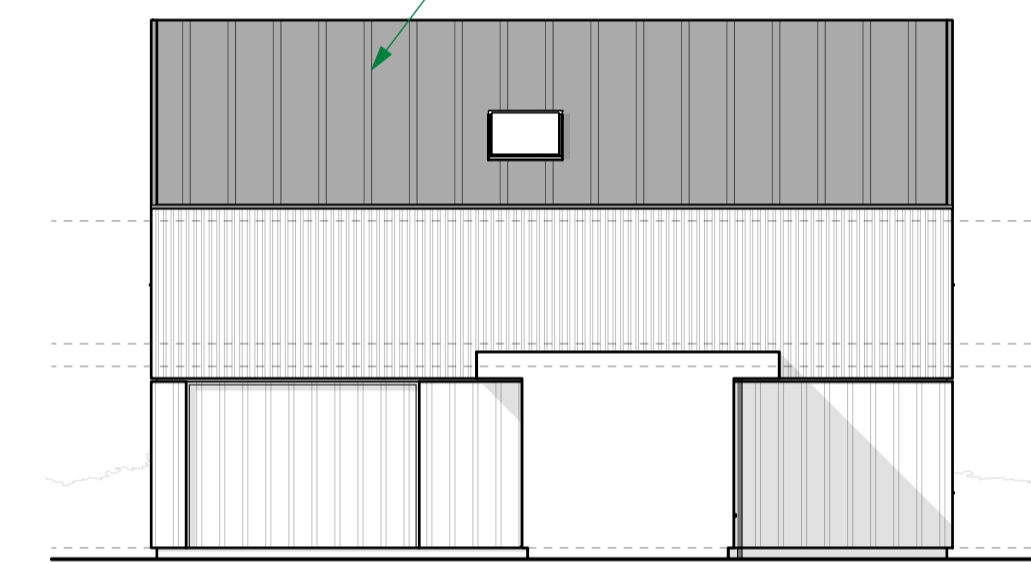
HIGH EFFICIENCY WOOD BURNER PROVIDING A SECONDARY HEAT SOURCE REDUCING PEAK DEMAND SIZE OF HEAT PUMP

ZINC STANDING SEAM ROOFING - LONG LASTING AND RECYCLEABLE - A SUSTAINABLE ROOFING MATERIAL

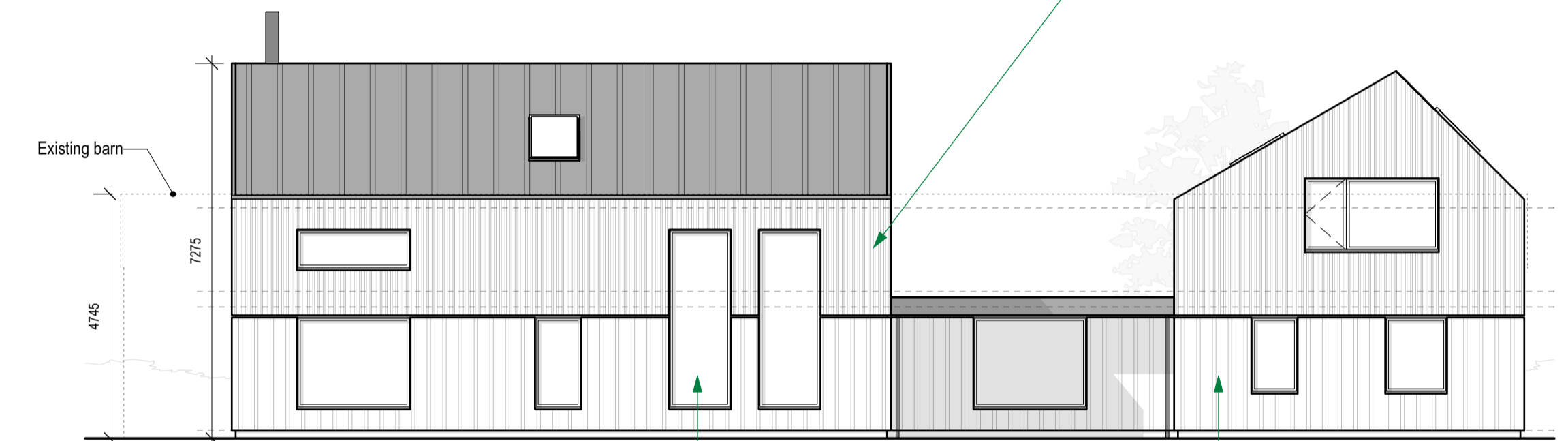
FSC CERTIFIED TIMBER CLADDING



4 SOUTH ELEVATION



5 SOUTH PARTIAL ELEVATION



6 EAST ELEVATION

EV CHARGING POINT

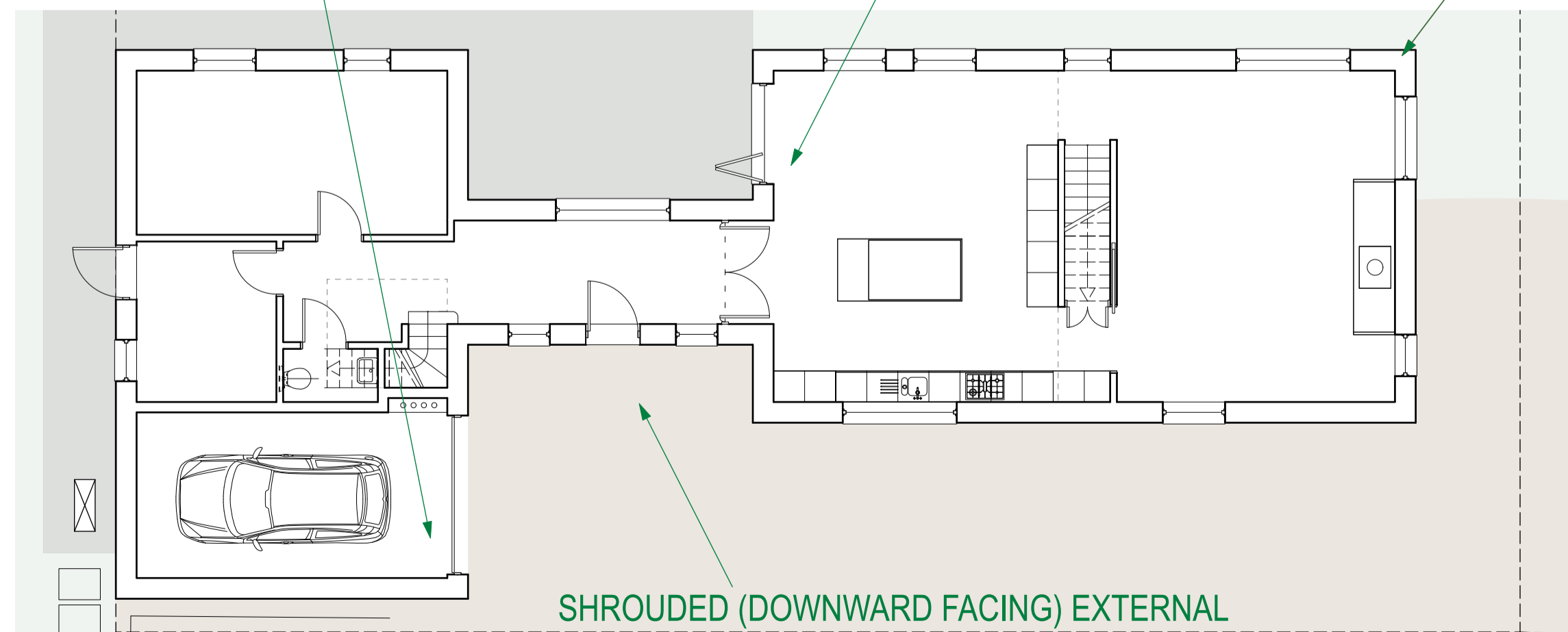
UNDERFLOOR HEATING WITH LOW TEMPERATURE HEATING DESIGN INCORPORATING HEAT PUMP

CONCEALED DOWNPIPES TO RAINWATER RECYCLING

SUSTAINABLY SOURCED TIMBER FRAME WITH PREFABRICATED INSULATED PANEL SYSTEM U VALUE 0.18 W/M²K

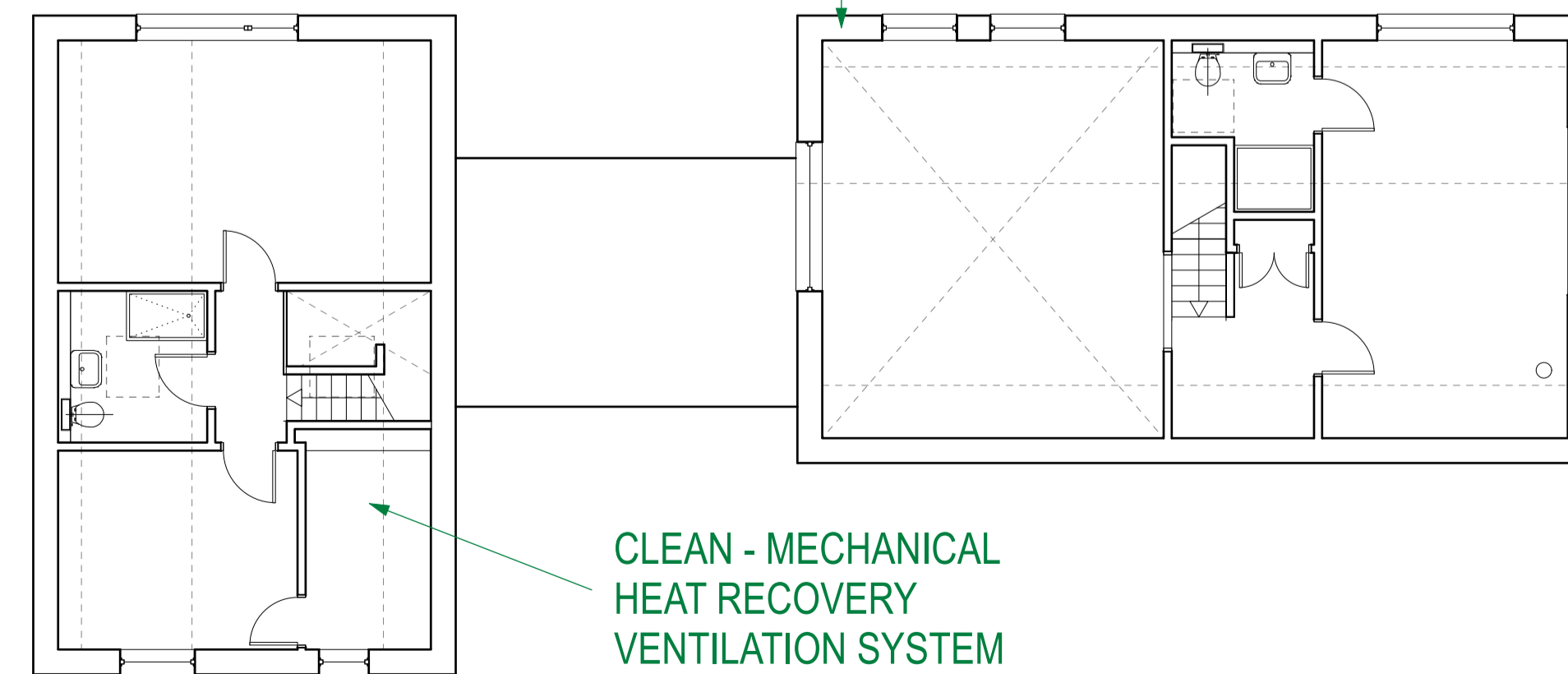
TRIPLE GLAZING IN THERMALLY BROKEN FRAMES - U VALUES EXCEEDING 0.1 W/M²K

AIR TIGHTNESS EXCEEDING BUILDING REGULATION REQUIREMENTS - DELIVERED WITH THROUGH CAREFUL CONSTRUCTION DETAILING AND SUPERVISION ON SITE



KEY PLAN - GROUND FLOOR

SHROUDED (DOWNWARD FACING) EXTERNAL LIGHTING TO ENTRANCE WEST ELEVATION WITH DIRECTIONAL PIR TO LIMIT UNWANTED TRIGGERING



KEY PLAN - FIRST FLOOR

CLEAN - MECHANICAL HEAT RECOVERY VENTILATION SYSTEM

Revision Notes

ANDREW HUGHES ARCHITECTS
22 Anglesea Road Ipswich IP13PP
info@AndrewHughesArchitects.com 07904 069 501

Project: LAND AT HORHAM ROAD Project No: 566

Drawing Title: PROPOSED ELEVATIONS

Scale: 1:100 Paper Size: A1 Drawn: BE Checked: AH Date: 27/08/2021

Drawing No: SK11 Rev: Issued For: PLANNING